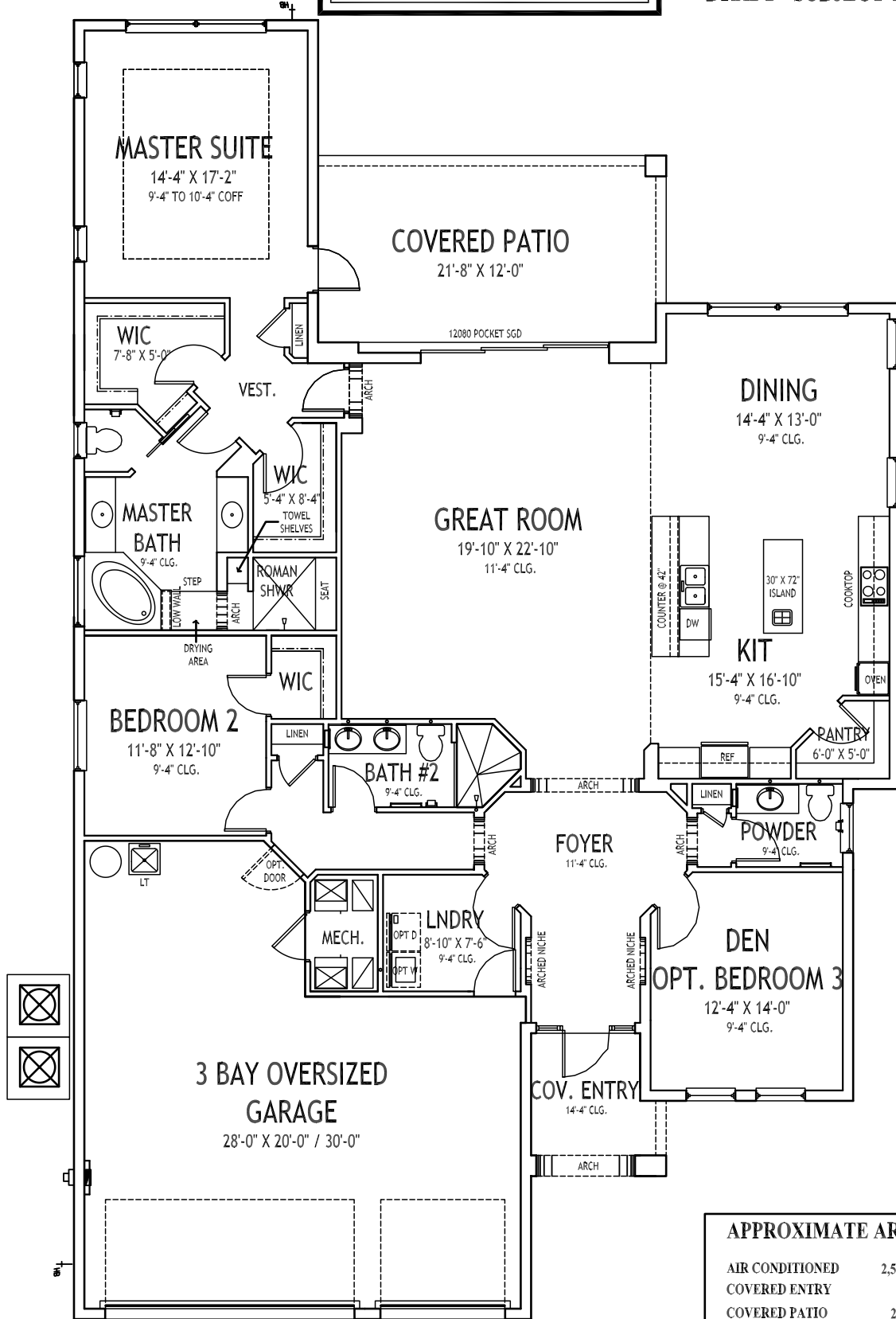


**Prelim Design**  
**CUSTOM MENDICINO**

**DRAFT - SUBJECT TO CHANGE**



APPROXIMATE AREAS	
AIR CONDITIONED	2,512 SQ FT
COVERED ENTRY	72 SQ FT
COVERED PATIO	266 SQ FT
3 BAY GARAGE	750 SQ FT
<b>APPROXIMATE</b>	<b>3,600 SQ FT</b>

53'W x 83'D

Copyright 2011, GHO Homes Corp.  
 #CBC051145 V3, 04-19-11

**GHO HOMES**



Seller reserves the right to make changes or modifications to plans, maps, plan specifications, materials, features, and colors without notice. Prices are subject to change without notice. Maps, plans, landscaping and elevation renderings are artist's conceptions, are not to scale, and may not accurately depict the homes or lots as they are built. These illustrations may depict options and features that are not standard on all models. Optional features may be included at additional cost and are subject to construction cut-off dates. All references to square footage are approximate and may vary with elevations. Lot fencing and walls may not be included in the purchase, and if not included, will vary according to size and location of lot. Exterior treatments, window locations, and room configurations may vary with elevation. Model home interior decorating, landscaping, fencing and other amenities are for display purposes only. This brochure is for illustrative purposes only and not a part of a legal contract.